

MAKING THE MOST OF YOUR OUTDOOR SPACE

MAINTAINING YOUR WATER FEATURE

A water feature can be one of the most relaxing and stunning additions to a backyard. However, if not properly maintained, an unused water feature can quickly turn into a murky eye sore. If you decide to forgo hiring a professional to maintain your water feature, here are a few steps to follow to keep it working properly.

HOW TO MAINTAIN A WATER FEATURE

Remove Debris Frequently

Use a filter, skimmer or pump screen to keep leaves, twigs, seeds and any other foreign objects out of your water.

Maintain a Proper Water Level

Water features will experience evaporation and splashing that will lead to water loss. Check the water levels weekly and add water as needed.

Watch for Leaks

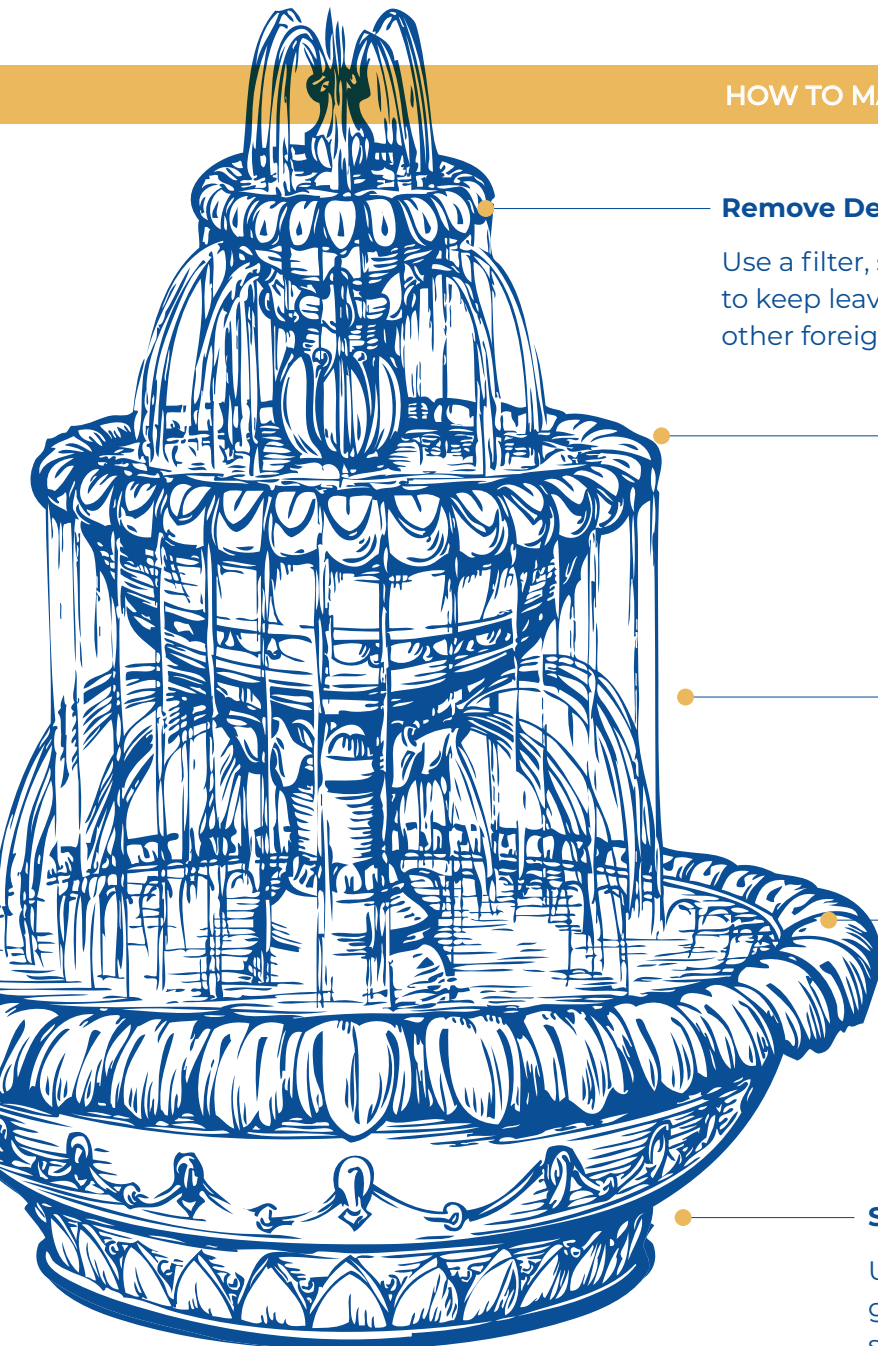
If you suddenly need to add water more frequently, check for leaks or plants growing in your filter.

Take Extra Care During Seasonal Changes

During the fall and winter you'll need to check for leaves and tree debris more frequently, and during the spring we suggest you complete a yearly clean-out, emptying the water feature to give it a full clean.

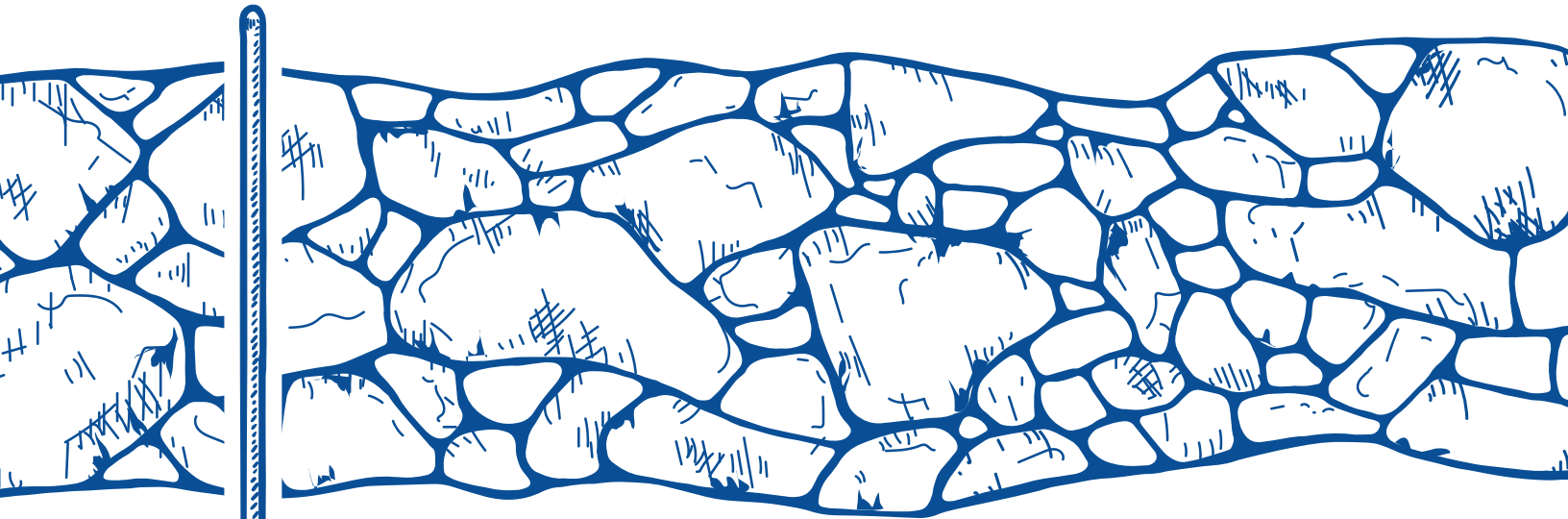
Stop Build-Up with a Clarifier

Use a clarifier to deter algae growth. Algae grow more rapidly in the warmer months, so consider using a time-release algaecide in tablet form during summer months.



MAINTAINING WALKWAYS

Once installed, walkways typically don't require much maintenance and upkeep. However, depending on which type of material used, it's important to clean and seal your walkway once it's finished to help preserve it.



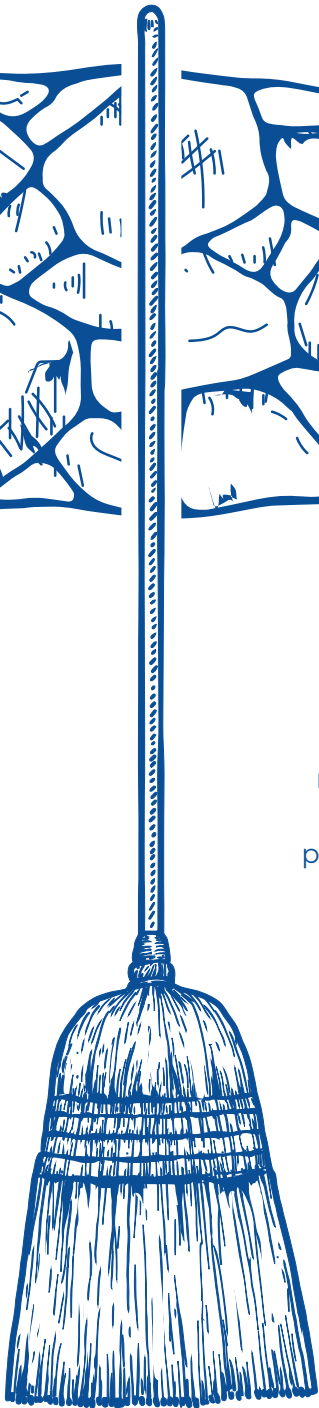
POLYMERIC SAND

If you installed pavers for your walkway, weeds and moss will eventually begin to grow between bricks and become an ongoing problem. Adding polymeric sand will eliminate this issue.



SWEEPING

Simply keeping dirt, grass clippings and other debris – which will eventually begin to wear down the material used to create the path – swept off your walkway will keep it functional and looking attractive.



STAINING

Staining or re-staining your deck can feel intimidating. But if you allow water to enter the wood, you'll start to see small cracks and damage. When done correctly, staining will add new life and protect your beautifully finished deck.

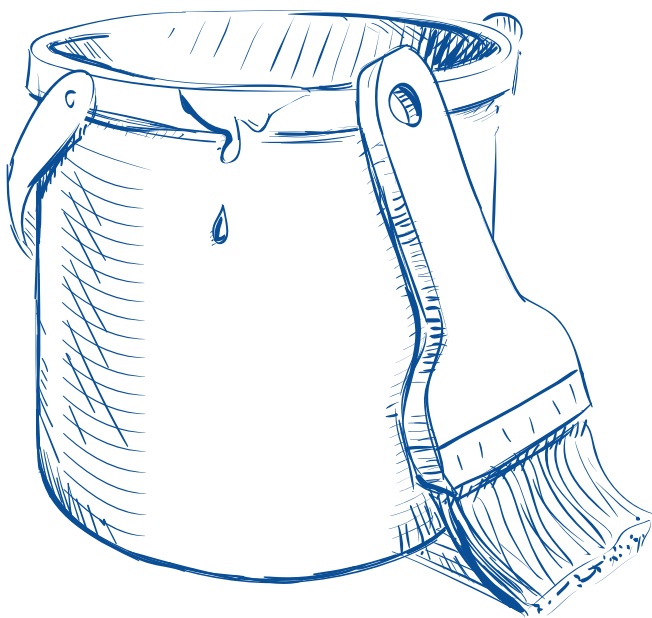
HERE ARE FOUR SIMPLE STEPS TO STAINING YOUR DECK OR PERGOLA

STAIN

Always start in a discrete spot to see how the stain is absorbed into the wood and how hard it is to apply evenly. Never allow the stain to puddle and always brush out the stain to get the best coating.

Most stains have the consistency of water, meaning they drip easily and will splatter if you move too quickly. Using less on your brush will help protect you from these mistakes. We suggest working with a partner: while one person rolls on the stain the other can use a brush to remove any excess liquid.

Drying time for your stain will be influenced by a few factors like air temperature, wind speed, moisture content of the deck wood, and direct sunlight or shade application.



1. Repair Any Issues

Fix issues like uneven boards, popped nails or peeling paint before picking your stain color to ensure an easy application.

2. Clean the Deck

Stripping off stain is a good idea if it's peeling or worn down, or if you want to change the color. Power washing is a great option for removing old stain to get it ready for a new coat. You may also want to use a deck brightener as a solution to removing any debris or old stain.

3. Make Sure the Material is Ready for Staining

Depending on the material used to build your deck and the age of the deck, you might need to give the wood some time for the chemicals to dry out before it will properly accept stain.

4. Grab Your Supplies

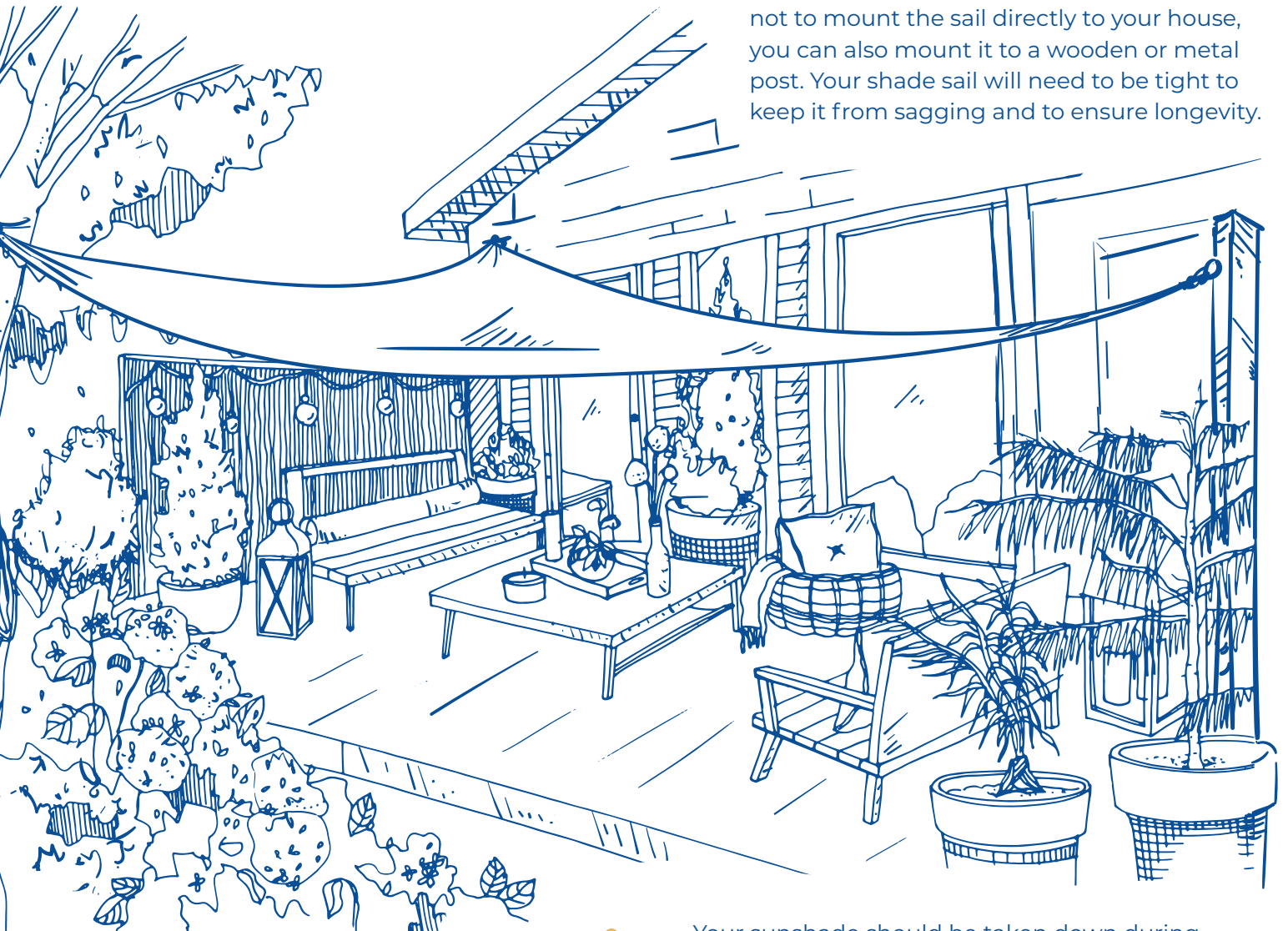
- Outdoor deck stain (make sure to read the label)
- Stain sprayer for railings and spindles
- Drop cloths
- Paint roller
- Paint brushes
- Paint roller tray
- Face mask, rubber gloves, eye protection
- Stain pad
- Stain pad applicator
- Ladder

INSTALLING A SHADE SAIL

If you're looking to add more shade or protection to your outdoor space, a shade sail might be the answer. Shade sails are a cost effective and efficient way to increase usability of your space on long summer days while still leaving your house windows with access to natural light.

● The first step to installing a shade is choosing the correct size, shape and color. First, you'll need to choose the shape and, based on that, you can start to decide which dimensions work best for the area where it will be installed.

● Once measured you can begin the mounting process. To mount the sail to the exterior of your home, you'll need to choose a strong location such as concrete or brick. This point will need to withstand the force of the weather elements that your house faces. If you prefer not to mount the sail directly to your house, you can also mount it to a wooden or metal post. Your shade sail will need to be tight to keep it from sagging and to ensure longevity.



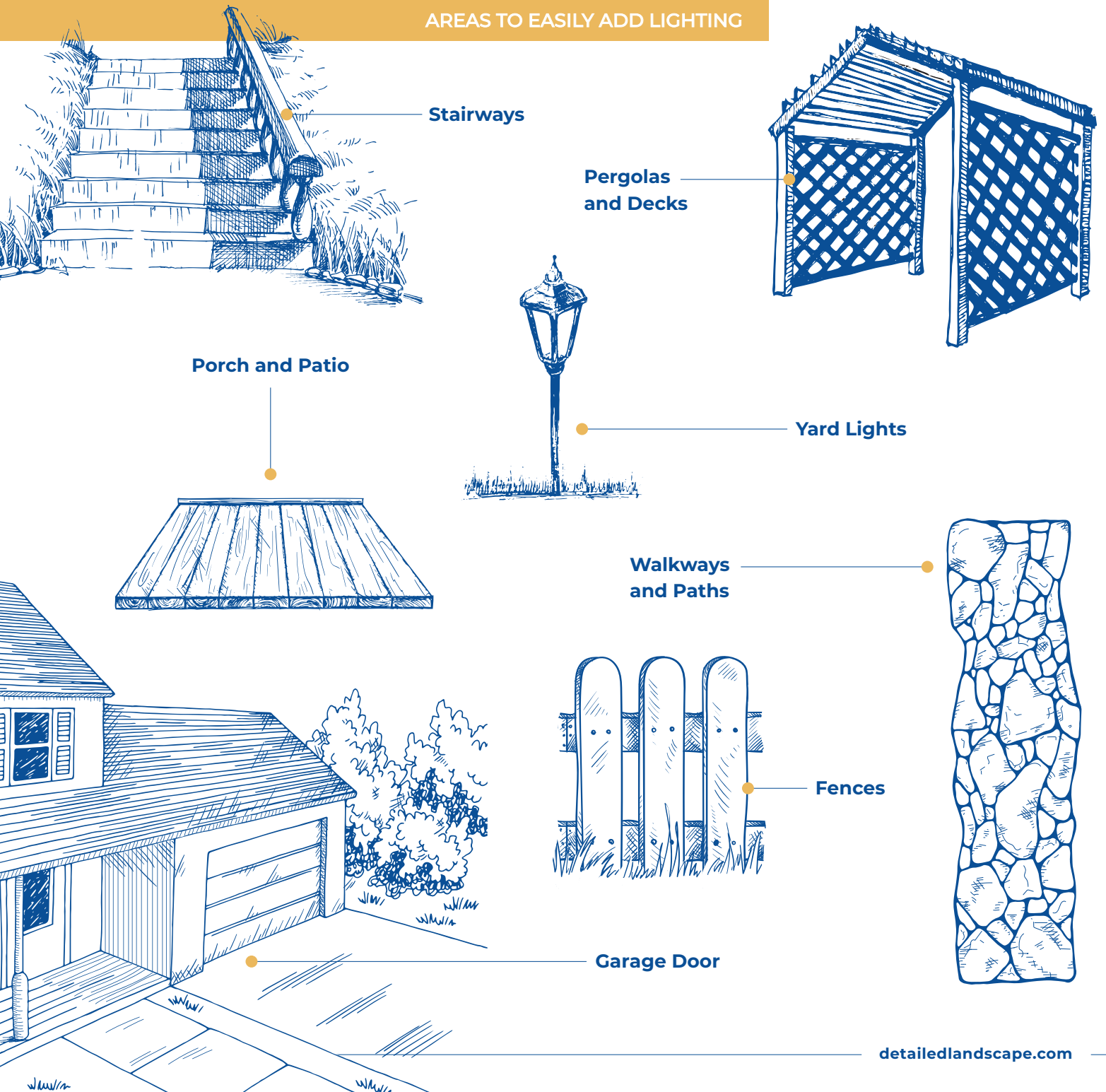
● Your sunshade should be taken down during extreme weather or a heavy rainstorm.

MAKING THE MOST OF YOUR OUTDOOR SPACE

OUTDOOR LIGHTING

Adding outdoor lighting can make a huge difference in your outdoor area. Not only do lights add curb appeal, lighting will extend the life and usage of your yard, especially in the darker winter months. When correctly installed, your outdoor lighting will add functionality and create illumination that complements the look of your home.

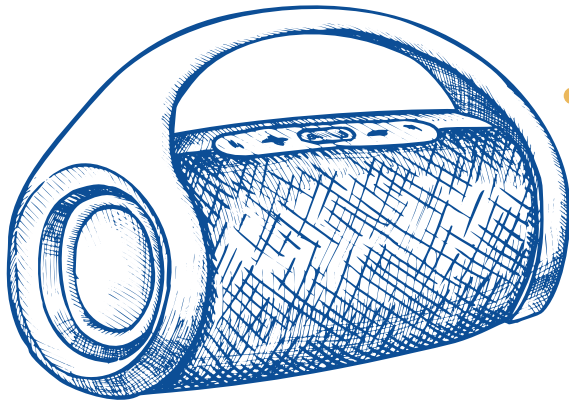
AREAS TO EASILY ADD LIGHTING



SPEAKERS

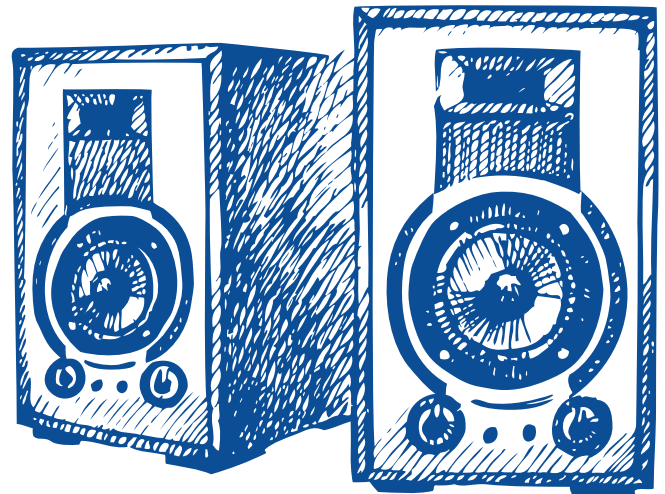
Speakers are a great addition to any yard. No matter how large or small your outdoor area is, finding a permanent, high-quality, waterproof speaker will be a huge upgrade to your outdoor experience.

THINGS TO CONSIDER WHILE SHOPPING FOR OUTDOOR SPEAKERS



Rain, dust, bugs, wind and snow are all elements your speakers will sit through. Make sure you purchase a set that was designed to be outside.

Are you looking for wireless or would you like them to be traditionally wired? Wired speakers offer a higher sound quality, but will require more planning and likely more work.



Consider landscape speakers. This system allows you to extend your speakers into the yard. They're designed to bring music into the existing landscape and can easily blend into the surroundings for a more aesthetic appeal.

