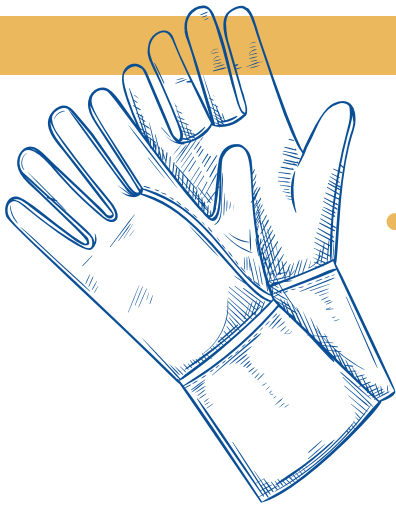


DEADHEADING

Deadheading your shrubs is an important part of the pruning process. Excess blooms and leaves can prevent sunlight from reaching the lower branches and stems. It also extends the blooming season of your shrub, improving its overall appearance.

HOW TO DEADHEAD



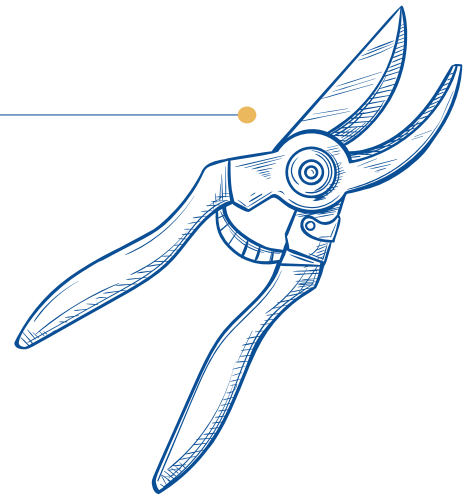
Pinch

If the stem is thin and crisp enough, simply pinch off the spent flower with your fingertips.

Trim

When a bud begins to wilt, cut directly above the next set of foliage with garden scissors or pruners.

When all buds are spent, cut back the entire stem directly above any foliage at the base.



Shear

When many buds are bunched closely together, wait until most have bloomed then shear back approximately one half of the plant.

