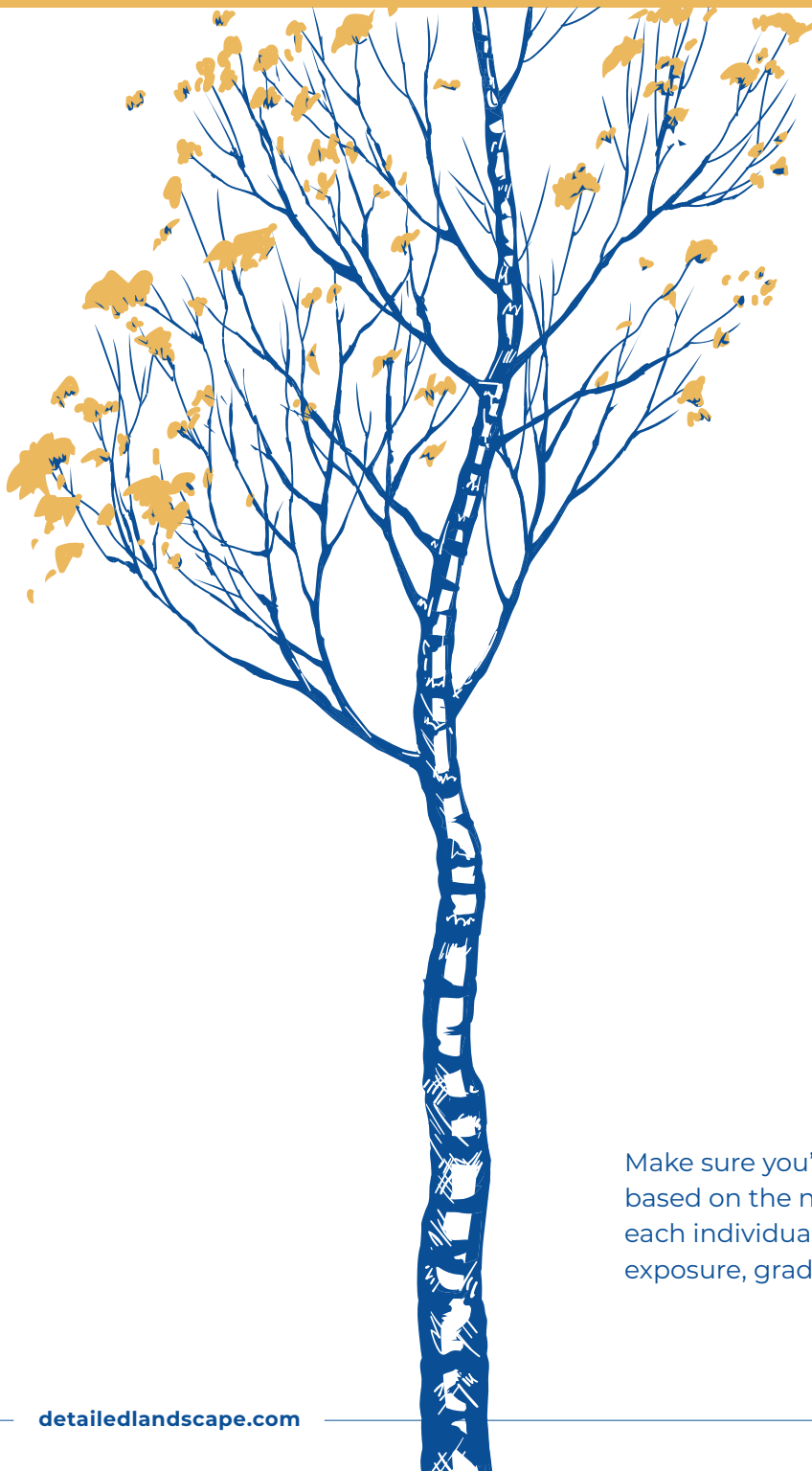


ADD PRIVACY TO YOUR BACKYARD

# NATURAL BARRIERS

You can increase the privacy of your backyard with fencing, trees, vines and pergolas, keeping your space out of the line of sight of neighbors and passerby.

## PLANT THESE FAST-GROWING TALL TREES FOR A NATURAL BARRIER



- — **Aspens**
- — **Colorado Blue Spruce**
- — **Southwestern White Pine**
- — **Spartan Juniper**
- — **Thuja Green Giant**
- — **Norway Spruce**
- — **Canadian Hemlock**
- — **Spring Snow Crabapple**
- — **Columnar Blue Spruce**

Make sure you're deciding on and planting trees based on the needs and recommendations for each individual tree based on water, soil, sunlight exposure, grade and any other specified factors.